

WATERPROOFING SYSTEM COVERING UNDER GLUED COATING NEXA POLYUREA

NEXA COATINGS

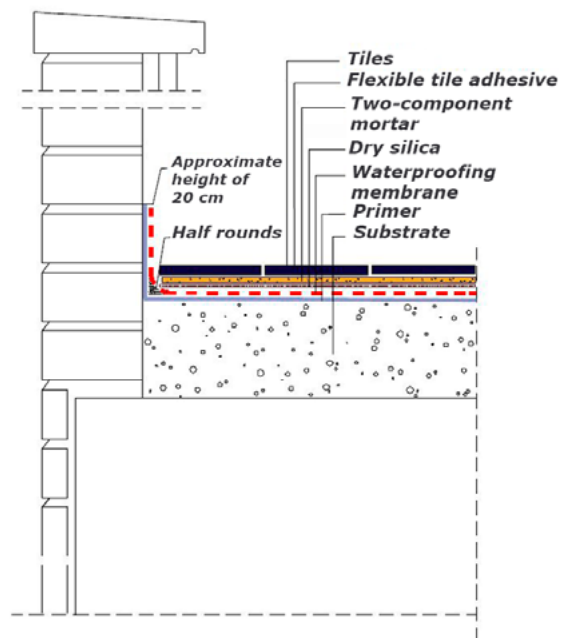
Details and definition of the constructive solution for inclusion in the waterproofing project of coverings under glued coating using a hot-applied polyurea liquid membrane, 1:1 by volume, NEXA POLYUREA. Depending on the technical and aesthetic requirements of each project, the system can be implemented using the membranes specified in the attached table.

Constructive solution for the glued coating system

Waterproofing of the covering under glued coating using a hot-applied polyurea liquid membrane, 1:1 by volume, NEXA POLYUREA, with a dosage of 0.410 lb/ft² (2 kg/m²) without reinforcement. The process includes cleaning and preparation of the substrate, priming, treatment of downspouts, expansion joints, intersections, and singular points, in compliance with the manufacturer's technical specifications.

Sprinkle dry and calibrated silica of 0.8 mm (0.0315 inches) with a performance of 0.614 lb/ft² (3 kg/m²) on a fresh layer of NEXA POLYUREA membrane with a dosage of 0.400 kg/m² (0.082 lb/ft²); apply elastic tile adhesive and finish with the required coating.

The performance is 0.307 to 0.410 lb/ft² (1.5-2 kg/m²).



MEMBRANES AVAILABLE FOR THE SYSTEM

NEXA PU CLASSIC

NEXA POLYUREA

NEXA POLYUREA COLD

1/2

NEXA COATINGS

C/ Aiguafreda 24
L'Ametlla del Vallès
08480 Barcelona Spain

✉ contact@nexacoatings.com
☎ contact: +34 656 43 74 36
🌐 www.nexacoatings.com

WATERPROOFING SYSTEM COVERING UNDER GLUED COATING NEXA POLYUREA

NEXA COATINGS

The adhesion of the material depends on the quality of the substrate. Proper substrate preparation, correct treatment of singular points, and the selection of the most appropriate primer are essential. Below, we outline some key considerations and refer you to the annex, where you can find more detailed information. Please note that these systems and treatments are generic and do not take into account the specific characteristics of each project, so we recommend contacting the technical or commercial support team in your area.

Substrate Preparation

Analysis and preparation of new or rehabilitated substrates
Ensure that the surfaces are smooth, clean, dry, and as hard as possible, following the guidelines provided in the "Preparation and Treatment Guide for Singular Points." (See www.nexacoatings.com)

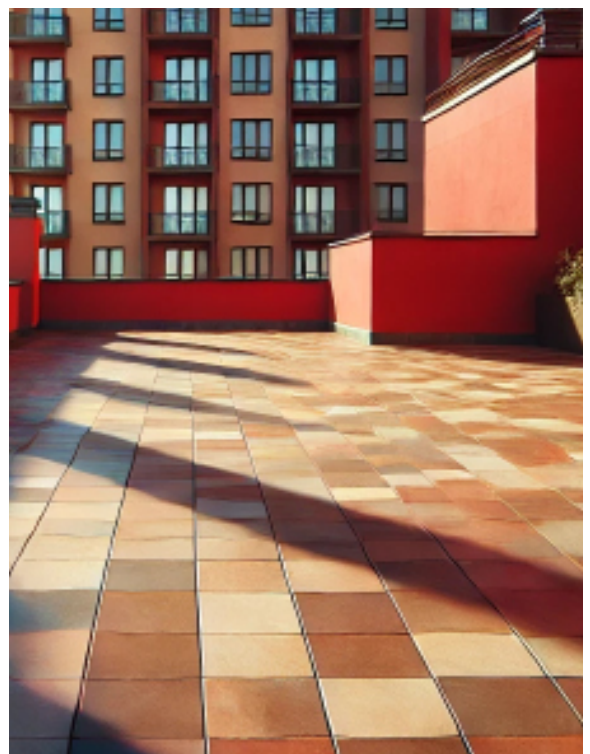
Treatment of Singular Points

Intersections with downspouts, expansion joints, sharp edges, coves, mechanical fixations, cable penetrations, edge trims, and border treatments:

These should be addressed using NEXA MASTIC PU polyurethane sealant or mesh, according to the diagrams provided in our "Preparation and Treatment Guide for Singular Points." (See www.nexacoatings.com)

Priming

Depending on the quality, porosity, or nature of the substrate to be coated, or the type of product to be used, it may be necessary to apply, with a consumption of 0.02 to 0.09 lb/ft² (0.100 to 0.450 kg/m²), one of the following primers: NEXA PRIMER EPOX W or NEXA PRIMER PU 2K. Some waterproofing applications may require a vapor barrier, which can be created with NEXA PRIMER EPOX W (0.12–0.20 lb/ft² (0.6–1 kg/m²) depending on the substrate's porosity). (See www.nexacoatings.com)



2/2

NEXA COATINGS

C/ Aiguafreda 24
L'Ametlla del Vallès
08480 Barcelona Spain

✉ contact@nexacoatings.com
☎ contact: +34 656 43 74 36
🌐 www.nexacoatings.com