

WATERPROOFING SYSTEM VISITABLE ROOF NEXA PU CLASSIC

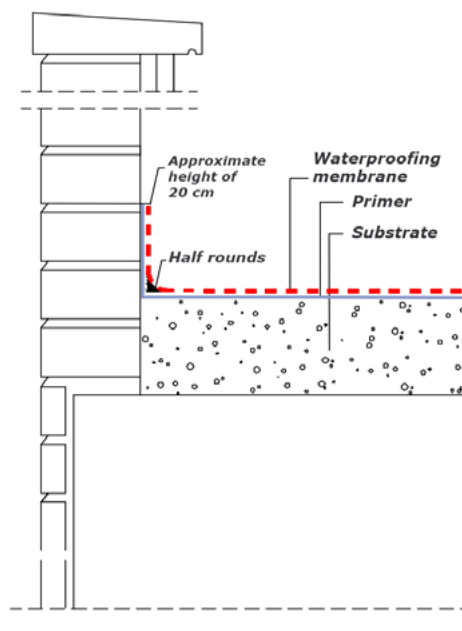
NEXA COATINGS

Details and definition of the constructive solution for inclusion in the waterproofing project of walkable roofs using a polyurethane liquid membrane, NEXA PU CLASSIC. Depending on the technical and aesthetic requirements of each project, the system can be implemented using the membranes specified in the attached table.

Constructive solution for the walkable system

Waterproofing of the visitable roof using a polyurethane liquid membrane, NEXA PU CLASSIC, with a dosage of 4.1 lb/100 ft² (2 kg/m²) without reinforcement. The process includes cleaning and preparation of the substrate, priming with NEXA PRIMER PU, treatment of downspouts, expansion joints, intersections, and singular points, in compliance with the manufacturer's technical specifications.

The minimum performance is 3.1-4.1 lb/100 ft² (1.5-2 kg/m²), equivalent to 47 mils (1.2 mm) thickness. Apply in 1, 2, or 3 coats.



MEMBRANES AVAILABLE FOR THE SYSTEM

| | |
|-----------------|--------------------|
| NEXA PU CLASSIC | NEXA POLYUREA COLD |
| NEXA POLYUREA | NEXA PU UV |
| NEXA SILICONE | NEXA PU W 2K |
| NEXA HYBRID 2K | |

1/2

NEXA COATINGS

C/ Aiguafreda 24
L'Ametlla del Vallès
08480 Barcelona Spain

✉ contact@nexacoatings.com
☎ contact: +34 656 43 74 36
🌐 www.nexacoatings.com

WATERPROOFING SYSTEM VISITABLE ROOF NEXA PU CLASSIC

NEXA COATINGS

The adhesion of the material depends on the quality of the substrate. Proper substrate preparation, correct treatment of singular points, and the selection of the most appropriate primer are essential. Below, we outline some key considerations and refer you to the annex, where you can find more detailed information. Please note that these systems and treatments are generic and do not take into account the specific characteristics of each project, so we recommend contacting the technical or commercial support team in your area.

Substrate Preparation

Analysis and preparation of new or rehabilitated substrates

Ensure that the surfaces are smooth, clean, dry, and as hard as possible, following the guidelines provided in the "Preparation and Treatment Guide for Singular Points."

Repair surface defects, irregularities, cracks, and gaps using polyurethane sealant. (See www.nexacoatings.com)

Treatment of Singular Points

Intersections with downspouts, expansion joints, sharp edges, coves, mechanical fixations, cable penetrations, edge trims, and border treatments:

These should be addressed using NEXA MASTIC PU polyurethane sealant or mesh, according to the diagrams provided in our "Preparation and Treatment Guide for Singular Points." (See www.nexacoatings.com)

Priming

Depending on the quality, porosity, or nature of the substrate to be coated, or the type of product to be used, it may be necessary to apply, with a consumption of 0.02 to 0.09 lb/ft² (0.100 to 0.450 kg/m²), one of the following primers: NEXA PRIMER EPOX W or NEXA PRIMER PU 2K. Some waterproofing applications may require a vapor barrier, which can be created with NEXA PRIMER EPOX W (0.12–0.20 lb/ft² (0.6–1 kg/m²) depending on the substrate's porosity). (See www.nexacoatings.com)



NEXA COATINGS

C/ Aiguafreda 24
L'Ametlla del Vallès
08480 Barcelona Spain

✉ contact@nexacoatings.com
☎ contact: +34 656 43 74 36
🌐 www.nexacoatings.com

2/2